

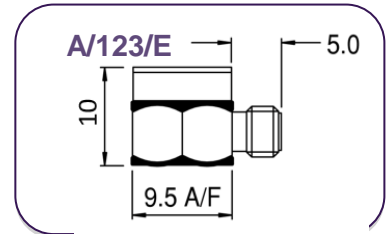
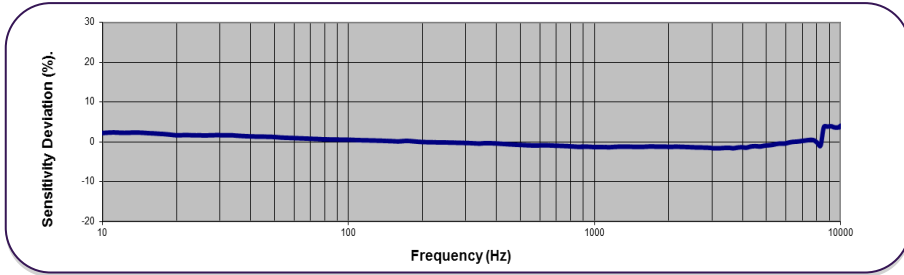
微型压电 IEPE 单轴加速度计: A/123/E

灵敏度: 1mV/g ~ 250mV/g (±10%) 重量: 3.4g

最高温度: 185 °C



Typical Frequency Response



Options

- Extended low frequency response
- Wideband temperature calibration -50/+125°C.
- A/123/E - Side entry
- A/123/S - Side entry stud
- A/123/TE - Top entry
- A/123/TS - Top entry stud
- A/123/EB - Side entry, tapped base
- A/123/TB - Tapped Base

压电IEPE加速度计的A / 123系列具有Konic剪切设计感测元件, 包括混合QVC, 其包装可提供侧面/顶部进入连接器, 一体式螺柱或扁平底座 (用于粘合剂安装) 的选择。

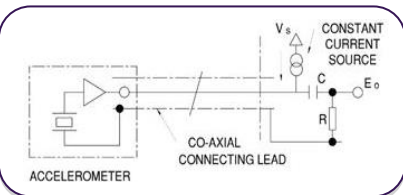
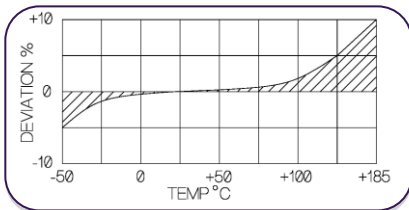
A / 123是要求低质量紧凑型设计以最小化质量加载效果的应用的理想选择, 它提供了具有线性响应的宽频带。作为高温IEPE加速度计提供, 最高工作温度为185°C, A / 123具有高度的通用性和耐用性加速度计。应用包括模态测试, 常规振动测试, NVH, 封装测试, 冲击测试等。

NOTE: 所示的电压灵敏度是标准的。我们可以根据要求提供各种灵敏度, 并建议对应用进行评估以确定所需的灵敏度。

Typical Spectral Noise (100mV/g)

1Hz	761µg/√Hz
10Hz	193µg/√Hz
100Hz	37.8µg/√Hz
1kHz	11.2µg/√Hz
10kHz	4.2µg/√Hz

Temperature Response



	公制			英制		
Voltage Sensitivity ±10%	0.5mV/(m/s ²)	1.02mV/(m/s ²)	10.2mV/(m/s ²)	5mV/g	10mV/g	100mV/g
Resonant frequency	50 kHz					
Typ. Frequency Response ±5% ±10%	1Hz – 10kHz 0.7Hz – 11kHz					
Cross Axis error	≤5%					
Temperature Range	-50/+185°C (HT)			-58/+365°F (HT)		
Voltage sensitivity deviation (20°C / 68°F)	-5% @ -50°C +5% @ +125°C +/- 10% @ +185°C (HT)			-5% @ -58°F +5% @ +257°F +/- 10% @ +365°F (HT)		
Supply voltage	15/ 35 standard V DC					
Supply current	2/20 mA					
Bias voltage	9/10 V DC					
Max continuous accn. g sine	9807m/s ²			1000g		
Settling time to 90% final val.	<1 sec					
Base Strain Sensitivity	≤ 5%			≤ 5%		
Saturation limit g	9807m/s ²	4903m/s ²	490.3m/s ²	1000g	500g	50g
Noise level, equiv. mg	3					
Case material	Titanium					
Mounting	Adhesive			Adhesive		
Weight	3.4gm			0.12oz		
Case seal	Welded					
Size	9.5(A/F) x 10mm			0.37in (A/F) x 0.39in		
Connector	10-32 UNF Microdot					

Please note: For information and reference only. Data should not be used as pass / fail criteria for calibration purpose

