

微型压电 IEPE 单轴加速度计: A/122/V

灵敏度: 10mV/g ~ 1V/g (±10%) 重量: 12g 最高温度: 185 °C



通用压电IEPE加速度计, 灵敏度相同
范围为A / 120 / V, 但通过整个固定装置呈环形, 可实现360度全角度连接器定向, 减轻了重量和高度。

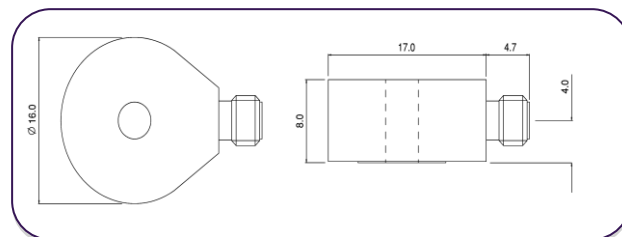
锂离子剪切机械预加载的陶瓷传感元件, 此外焊接的外壳密封件可最大程度地提高测量的完整性和可靠性。
A / 122 / V将直接连接到具有最小15V, 2mA传感器输出的频谱分析仪, 请注意, 由于驱动限制和高温下的动态范围, 最小电源可能会限制高频能力。请注意, 低电平测量受信号/噪声约束, 但如果带宽受到限制, 则可以实现。

Options

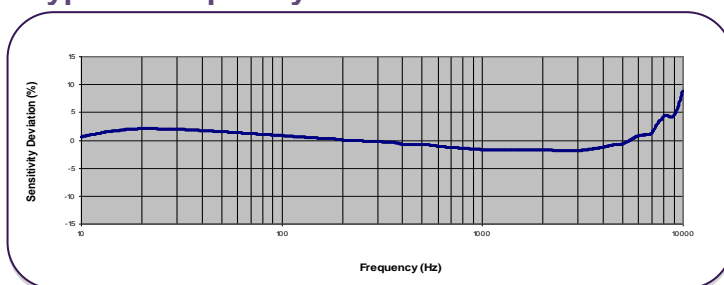
- 非标准灵敏度在10 / 100mV / g范围内
- 可用作185°C高温IEPE版本

Note

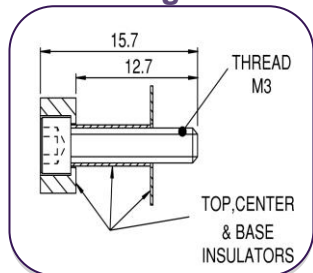
所示的电压灵敏度是标准的。我们提供广泛的应要求提供敏感性, 并建议应用程序评估以确定所需的灵敏度。



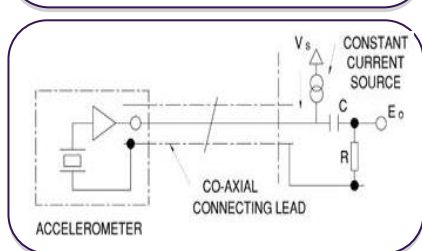
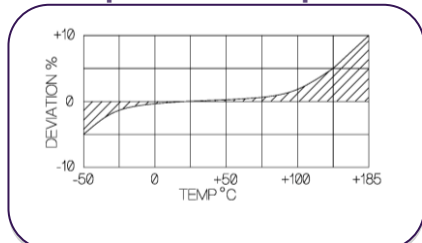
Typical Frequency



Mounting Stud SI-22



Temperature Response



Typical Spectral Noise (500mV/g)

1Hz	98.7µg/√Hz
10Hz	61µg/√Hz
100Hz	13.1µg/√Hz
1kHz	4.2µg/√Hz
10kHz	0.5µg/√Hz

	公制		英制	
Voltage Sensitivity ±10%	1.02mV/(m/s ²)	10.2mV/(m/s ²)	10mV/g	100mV/g
Resonant frequency	20 kHz			
Typical Frequency Response ±5%	1Hz - 7kHz			
±10%	0.7Hz - 8kHz			
Cross Axis error	≤5%			
Temperature Range	-50/+185°C		-58/+365°F	
Voltage sensitivity deviation (20°C/68°F)	-5% @ -50°C +5% @ +125°C +/- 10% @ +185°C		-5% @ -58°F +5% @ +257°F +/- 10% @ +365°F	
Supply voltage	15/35 V DC			
Supply current	2/15 mA			
Bias voltage	8/10 V DC			
Max continuous accn. g sine	9807m/s ²		1000g	
Settling time to 90% final val.	<1 sec			
Base Strain Sensitivity	≤ 5%		≤ 5%	
Case material	Stainless steel, 303 S31			
Mounting	Through hole, Ø3.5mm SI/22		Through hole, Ø1.4in SI/22	
Weight	12gm		0.42oz	
Case seal	Welded			
Size	17.2 x Ø16 x 9.5mm		0.68 x Ø0.63 x 0.37in	
Connector	10-32 UNF Microdot			

Please note: For information and reference only. Data should not be used as pass / fail criteria for calibration purposes

