



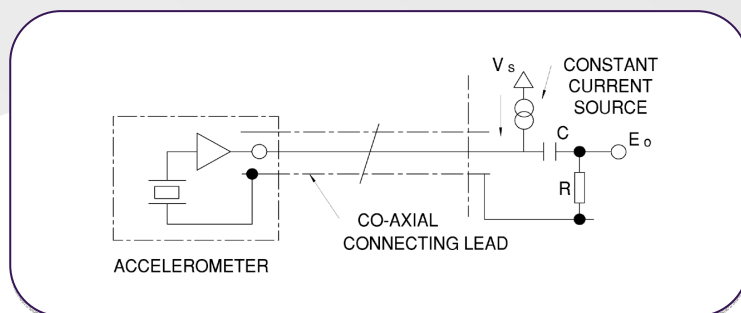
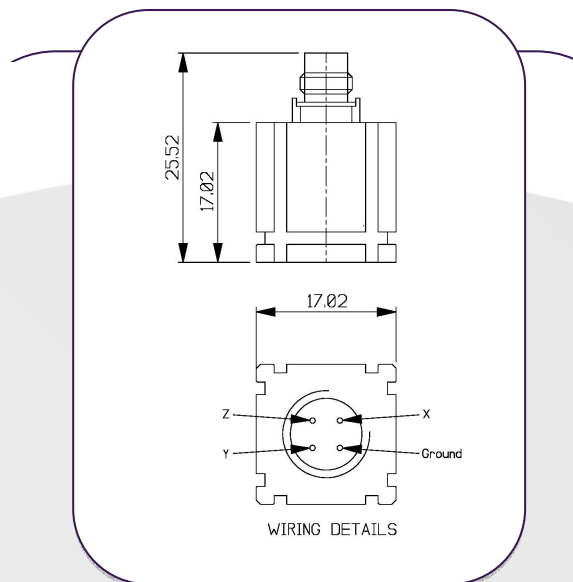
微型压电 IEPE 三轴加速度计：AT/11

灵敏度：1mV/g ~ 100mV/g (±10%) 重量：18.9g 最高温度：125°C

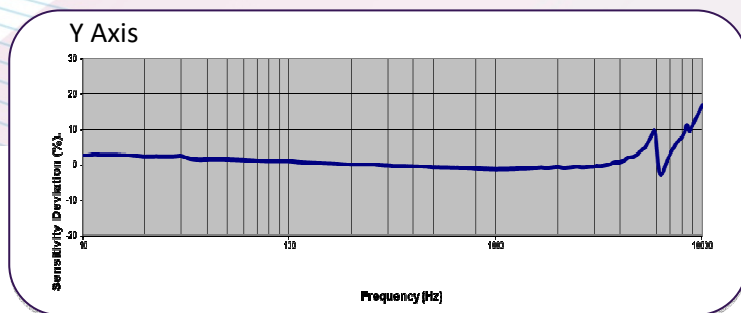
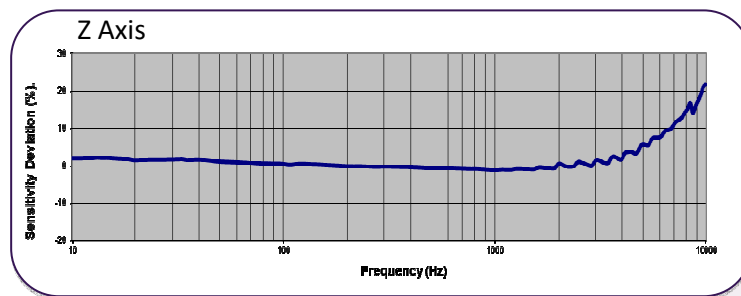
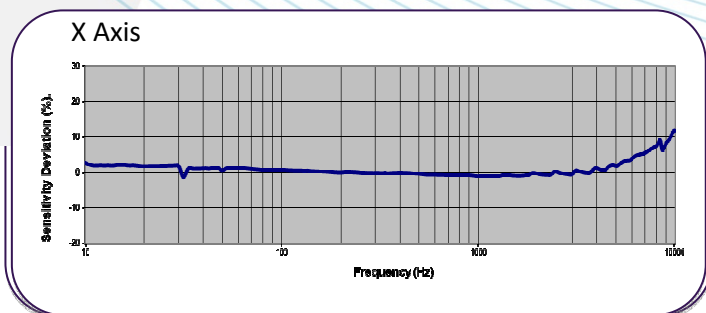
AT / 11主要是为模态分析和结构测试市场开发的，尤其侧重于汽车和航空航天市场。它可以直接替换为B&K 4506加速度计，并安装在同一夹子安装件中。

开槽的侧面和开槽的基座允许通过滑入随附的夹子将其安装在其5个面上。然后，用户可以使用常规胶水方法安装夹子，并根据需要将加速度计滑入和滑出夹子。这确保了测试的完美可重复性，而无需将加速度计留在原地。此外，对于大通道数测试，所有加速度计都可以以相同方向安装，从而简化了软件设置。

AT / 11采用钛合金制造，质量轻，寿命长，在三个正交轴内部安装了三个单独的Konic剪切传感元件；这样可在每个轴上提供出色的性能，而对交叉轴的影响最小。



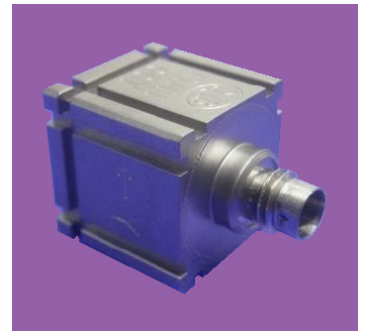
Typical Frequency Response



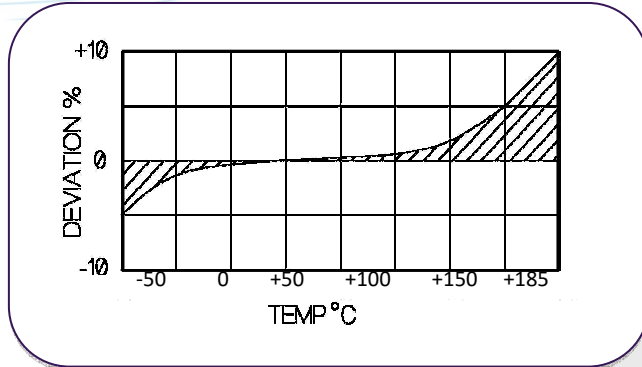
Please note: For information and reference only. Data should not be used as pass / fail criteria for calibration purposes

微型压电 IEPE 三轴加速度计：AT/11

灵敏度：1mV/g ~ 100mV/g (±10%) 重量：18.9g 最高温度：125°C



Temperature Response



Typical Spectral Noise (100mV/g)

| | |
|-------|---------------------------|
| 1Hz | 393.4 μ g/ \sqrt Hz |
| 10Hz | 174 μ g/ \sqrt Hz |
| 100Hz | 32.1 μ g/ \sqrt Hz |
| 1kHz | 12.7 μ g/ \sqrt Hz |
| 10kHz | 5.1 μ g/ \sqrt Hz |

| | 公制 | | | 英制 | | |
|---|----------------------------------|--------------------------|--------------------------|-----------------------------|--------------------------|--------------------------|
| | 0.1m/s ² | 1.02m/s ² | 10.2m/s ² | 1mV/g | 10mV/g | 100mV/g |
| Voltage Sensitivity @20°C ±10% | 0.1m/s ² | 1.02m/s ² | 10.2m/s ² | 1mV/g | 10mV/g | 100mV/g |
| Resonant frequency | Z Axis 33 kHz X/Y Axis 25 kHz | | | | | |
| Typical Frequency Response ±%5 (X/Y/Z Axis) ±10% | 1Hz - 5kHz 0.7Hz - 6kHz | 1Hz - 5kHz 0.7Hz-6kHz | 2Hz - 5kHz 1Hz - 6kHz | 1Hz - 5kHz 0.7Hz-6kHz | 1Hz - 5kHz 0.7Hz-6kHz | 2Hz - 5kHz 1Hz - 6kHz |
| Cross Axis error | ≤5% max | | | | | |
| Temperature Range | -50/+125°C | | | -58/+257°F | | |
| Voltage sensitivity deviation (20°C / 68°F) | -5% @ -50°C +5% @ +125°C | | | -5% @ -58°F +5% @ +257°F | | |
| Supply voltage | 15/ 35 V DC | | | | | |
| Supply current | 2/15 mA | | | | | |
| Bias voltage (20°C / 68°F) | 9/10 V DC | | | | | |
| Amplitude Linearity (%FS) | ≤1% | | | | | |
| Broadband resolution | 0.002grms | | | | | |
| Settling time to 90% final val. | <2 sec | | | | | |
| Max continuous accn.g sine | 49033m/s ² | | | 5000g | | |
| Saturation Limit | 49033m/s ² | 4903m/s ² | 490.3m/s ² | 5000g | 500g | 50g |
| Base Strain Sensitivity | ≤ 5% | | | | | |
| Case material | Titanium Grade 2 | | | | | |
| Mounting | Adhesive or Clip Mounting | | | | | |
| Weight | 18.9g | | | 0.67oz | | |
| Case seal | Welded hermetic connector | | | | | |
| Size | 17 x 17 x 17mm | | | 0.67 x 0.67 x 0.67in | | |
| Connector | 4 pin ¼ - 28 UNF | | | | | |

Please note: For information and reference only. Data should not be used as pass / fail criteria for calibration purposes